



Big, bold and better than ever.

BBP®85
LABEL PRINTER



The BBP®85 Sign a

There's **BIG** and **BOLD**.

Then there's **BIG** and **BOLD** from Brady.

The BBP®85 Label Printer allows you to create 10" labels in multiple colors, and it has an easier-than-ever interface that anyone on your team can use! No more complex, tedious design steps. No more ordering and waiting. Now you can just walk up and print... and instantly create high quality, multi-colored visuals up to 10" wide.



Big Output. Little Fuss.

Create extra-large custom signs and labels right now! This printer has our fastest, easiest operating system, so anyone on your team can design visuals with little to no training. The ideal printer for multi-user Lean 5S and kaizen labeling events!

- Unmistakably large visuals up to 10" wide
- Just walk up and print...it really is that easy!
- Simple touch-screen interface for stand-alone use, or print from your PC with MarkWare™ Software
- Timesaving label design apps to create pipe markers, safety signs, arc flash, right-to-know labels, and more!
- USB port for importing files, fonts and graphics



Bold Multi-Color Printing.

Get your message noticed with strong, colorful visuals. Print up to 4 colors on a single label for professional-looking, custom-made signs, labels and warnings that demand attention.

- Highly durable multi-color thermal transfer printing
- Print common sign formats even faster using pre-printed sign header supplies
- Add more label creation flexibility with Markware™ Software (v3.9.3 and higher)
- Ethernet port for easy printer networking

Don't Miss it!

See reverse side for part numbers and unfold for actual size label examples.

and Label Printer:



BRADY 360°
5 YEAR
WARRANTY

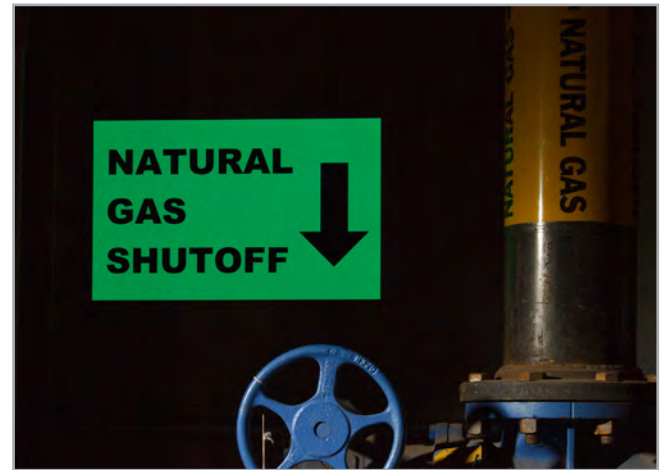


Best-of-the-Best Materials.

Brady's sign and label materials lead the industry in durability and performance. They withstand harsh conditions, stay stuck on the most challenging surfaces and they simply last longer than other materials on the market. With the BBP85 printer, you can choose from over one hundred supply options, including:

- Huge selection of 4" wide to 10" wide industrial grade outdoor materials
- Specialty materials including Reflective and Glow-in-the-Dark
- Pre-printed sign header supplies for GHS, arc flash and OSHA or ANSI safety signs, which means only one print pass!
- Rigid sign panels: Adhere a printed sign to a panel for quick rigid signs you can hang or post nearly anywhere.

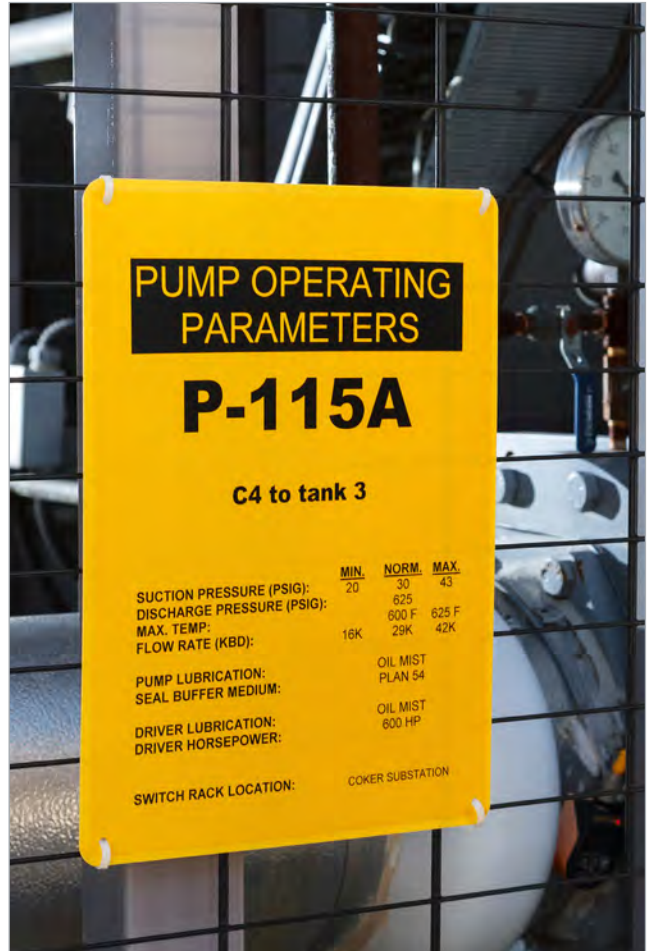
Big, bold and better



Don't Miss it!

See reverse side for part numbers and unfold for actual size label examples.

er than ever.



Indoor/Outdoor Vinyl (B-595)

For all-purpose facility and safety identification: our best industrial vinyl!

- Durable, low-shrink vinyl with our most aggressive adhesive and 8-10 year outdoor durability
- Conforms to irregular, curved, rough and highly textured surfaces (painted cinder blocks and wood, textured plastics, cast-iron and paper-jacketed pipes, powder-coated surfaces)

Service temp: -40°F to 180°F Application temp: 0°F to 180°F
Average Outdoor Durability: 8-10 year outdoor vinyl label durability.



Figure 33



Diagram	Catalog #	Color	Label Width A Inch (mm)	Roll Length B Inch (mm)	Labels Per Roll	Rec. Ribbon
Fig. 33	13538	White	4.000 (101.6)	50ft. (15.2m)	1 roll (cont)	13511
Fig. 33	13549	White	6.000 (152.4)	50ft. (15.2m)	1 roll (cont)	13511
Fig. 33	13651	White	7.000 (177.8)	50ft. (15.2m)	1 roll (cont)	13510
Fig. 33	13551	White	8.000 (203.2)	50ft. (15.2m)	1 roll (cont)	13510
Fig. 33	13562	White	10.000 (254.0)	50ft. (15.2m)	1 roll (cont)	13510
Fig. 33	13539	Yellow	4.000 (101.6)	50ft. (15.2m)	1 roll (cont)	13511
Fig. 33	13550	Yellow	6.000 (152.4)	50ft. (15.2m)	1 roll (cont)	13511
Fig. 33	13652	Yellow	7.000 (177.8)	50ft. (15.2m)	1 roll (cont)	13510
Fig. 33	13552	Yellow	8.000 (203.2)	50ft. (15.2m)	1 roll (cont)	13510
Fig. 33	13563	Yellow	10.000 (254.0)	50ft. (15.2m)	1 roll (cont)	13510
Fig. 33	13540	Red	4.000 (101.6)	50ft. (15.2m)	1 roll (cont)	13513
Fig. 33	13601	Red	6.000 (152.4)	50ft. (15.2m)	1 roll (cont)	13513
Fig. 33	13654	Red	7.000 (177.8)	50ft. (15.2m)	1 roll (cont)	13512
Fig. 33	13553	Red	8.000 (203.2)	50ft. (15.2m)	1 roll (cont)	13512
Fig. 33	13610	Red	10.000 (254.0)	50ft. (15.2m)	1 roll (cont)	13512
Fig. 33	13541	Blue	4.000 (101.6)	50ft. (15.2m)	1 roll (cont)	13513
Fig. 33	13602	Blue	6.000 (152.4)	50ft. (15.2m)	1 roll (cont)	13513
Fig. 33	13656	Blue	7.000 (177.8)	50ft. (15.2m)	1 roll (cont)	13512
Fig. 33	13554	Blue	8.000 (203.2)	50ft. (15.2m)	1 roll (cont)	13512
Fig. 33	13611	Blue	10.000 (254.0)	50ft. (15.2m)	1 roll (cont)	13512
Fig. 33	13542	Green	4.000 (101.6)	50ft. (15.2m)	1 roll (cont)	13513
Fig. 33	13603	Green	6.000 (152.4)	50ft. (15.2m)	1 roll (cont)	13513
Fig. 33	13655	Green	7.000 (177.8)	50ft. (15.2m)	1 roll (cont)	13512
Fig. 33	13555	Green	8.000 (203.2)	50ft. (15.2m)	1 roll (cont)	13512
Fig. 33	13612	Green	10.000 (254.0)	50ft. (15.2m)	1 roll (cont)	13512
Fig. 33	13543	Orange	4.000 (101.6)	50ft. (15.2m)	1 roll (cont)	13511
Fig. 33	13604	Orange	6.000 (152.4)	50ft. (15.2m)	1 roll (cont)	13511
Fig. 33	13653	Orange	7.000 (177.8)	50ft. (15.2m)	1 roll (cont)	13510
Fig. 33	13556	Orange	8.000 (203.2)	50ft. (15.2m)	1 roll (cont)	13510
Fig. 33	13613	Orange	10.000 (254.0)	50ft. (15.2m)	1 roll (cont)	13510

Diagram	Catalog #	Color	Label Width A Inch (mm)	Roll Length B Inch (mm)	Labels Per Roll	Rec. Ribbon
Fig. 33	13544	Black	4.000 (101.6)	50ft. (15.2m)	1 roll (cont)	13513
Fig. 33	13605	Black	6.000 (152.4)	50ft. (15.2m)	1 roll (cont)	13513
Fig. 33	13557	Black	8.000 (203.2)	50ft. (15.2m)	1 roll (cont)	13512
Fig. 33	13614	Black	10.000 (254.0)	50ft. (15.2m)	1 roll (cont)	13512
Fig. 33	13545	Gold	4.000 (101.6)	50ft. (15.2m)	1 roll (cont)	13511
Fig. 33	13606	Gold	6.000 (152.4)	50ft. (15.2m)	1 roll (cont)	13511
Fig. 33	13558	Gold	8.000 (203.2)	50ft. (15.2m)	1 roll (cont)	13510
Fig. 33	13615	Gold	10.000 (254.0)	50ft. (15.2m)	1 roll (cont)	13510
Fig. 33	13546	Gray	4.000 (101.6)	50ft. (15.2m)	1 roll (cont)	13511
Fig. 33	13607	Gray	6.000 (152.4)	50ft. (15.2m)	1 roll (cont)	13511
Fig. 33	13559	Gray	8.000 (203.2)	50ft. (15.2m)	1 roll (cont)	13510
Fig. 33	13616	Gray	10.000 (254.0)	50ft. (15.2m)	1 roll (cont)	13510
Fig. 33	13547	Brown	4.000 (101.6)	50ft. (15.2m)	1 roll (cont)	13513
Fig. 33	13608	Brown	6.000 (152.4)	50ft. (15.2m)	1 roll (cont)	13513
Fig. 33	13560	Brown	8.000 (203.2)	50ft. (15.2m)	1 roll (cont)	13512
Fig. 33	13617	Brown	10.000 (254.0)	50ft. (15.2m)	1 roll (cont)	13512
Fig. 33	13548	Purple	4.000 (101.6)	50ft. (15.2m)	1 roll (cont)	13513
Fig. 33	13609	Purple	6.000 (152.4)	50ft. (15.2m)	1 roll (cont)	13513
Fig. 33	13561	Purple	8.000 (203.2)	50ft. (15.2m)	1 roll (cont)	13512
Fig. 33	13618	Purple	10.000 (254.0)	50ft. (15.2m)	1 roll (cont)	13512
Fig. 33	59529	Clear ///	4.000 (101.6)	50ft. (15.2m)	1 roll (cont)	13511
Fig. 33	59530	Clear ///	6.000 (152.4)	50ft. (15.2m)	1 roll (cont)	13511
Fig. 33	59531	Clear ///	8.000 (203.2)	50ft. (15.2m)	1 roll (cont)	13510
Fig. 33	59532	Clear ///	10.000 (254.0)	50ft. (15.2m)	1 roll (cont)	13510

U.S. Patent Nos. 5,318,370; 5,823,689; 6,570,602. Additional Patents Pending.

Pre-Printed Right-To-Know Chemical Labels (B-595)

For quickly creating NFPA and color bar labels.

- Blank die cut labels pre-printed with chemical diamonds and color bars
- Allows printer to produce 5-color chemical labels in a single print pass
- Indoor/outdoor grade material withstands exposure to moisture, chemicals and handling

Service temp: -40°F to 180°F Application temp: 0°F to 180°F
Average Outdoor Durability: 8 to 10 years outdoor vinyl label durability



Catalog #	Legend	Label Height A Inch (mm)	Label Width B Inch (mm)	Labels Per Row	Labels Per Roll	Rec. Ribbon
130808	Diamond + Text	4.000 (101.6)	6.000 (152.4)	1	95	13511
130809	Diamond + Text	7.000 (177.8)	10.000 (254.0)	1	60	13510
130810	Diamond Only	6.000 (152.4)	6.000 (152.4)	1	95	13511
130811	Color Bar + Text	4.000 (101.6)	6.000 (152.4)	1	95	13511
130812	Color Bar + Text	7.000 (177.8)	10.000 (254.0)	1	60	13510

Pre-Printed Pre-Cut Blank Sign Headers (B-595, B-7569)

For creating arc flash and safety warning labels in seconds.

- Faster way to design commonly used safety signs and labels
- Create custom, colorful safety labels using only a black ribbon
- Headers meet NFPA 70E, OSHA 1910.145 and ASME/ANSI Z535 standards
- Indoor/outdoor grade material conforms to rough, highly textured, and "difficult to adhere to" surfaces

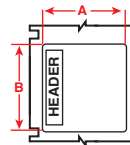


Figure 70



Diagram	Catalog #	Material	Legend	Label Height A Inch (mm)	Label Width B Inch (mm)	Labels Per Roll	Rec. Ribbon
Fig. 70	140886	B-7569		10.000 (254.0)	14.000 (355.6)	40	13510
Fig. 70	130750	B-595		7.000 (177.8)	10.000 (254.0)	60	13510
Fig. 70	130749	B-595		4.000 (101.6)	6.000 (152.4)	95	13511
Fig. 70	140887	B-7569		10.000 (254.0)	14.000 (355.6)	40	13510
Fig. 70	130753	B-595		7.000 (177.8)	10.000 (254.0)	60	13510
Fig. 70	130752	B-595		4.000 (101.6)	6.000 (152.4)	95	13511
Fig. 70	140888	B-7569		10.000 (254.0)	14.000 (355.6)	40	13510
Fig. 70	130756	B-595		7.000 (177.8)	10.000 (254.0)	60	13510
Fig. 70	130755	B-595		4.000 (101.6)	6.000 (152.4)	95	13511
Fig. 70	140889	B-7569		10.000 (254.0)	14.000 (355.6)	40	13510
Fig. 70	130759	B-595		7.000 (177.8)	10.000 (254.0)	60	13510
Fig. 70	130758	B-595		4.000 (101.6)	6.000 (152.4)	95	13511
Fig. 70	140885	B-7569		10.000 (254.0)	14.000 (355.6)	40	13510
Fig. 70	130762	B-595		7.000 (177.8)	10.000 (254.0)	60	13510
Fig. 70	130761	B-595		4.000 (101.6)	6.000 (152.4)	95	13511
Fig. 70	140890	B-7569		10.000 (254.0)	14.000 (355.6)	40	13510
Fig. 70	130765	B-595		7.000 (177.8)	10.000 (254.0)	60	13510
Fig. 70	130764	B-595		4.000 (101.6)	6.000 (152.4)	95	13511
Fig. 70	140883	B-7569		10.000 (254.0)	14.000 (355.6)	40	13510
Fig. 70	132393	B-595		7.000 (177.8)	10.000 (254.0)	60	13510
Fig. 70	140884	B-7569		10.000 (254.0)	14.000 (355.6)	40	13510
Fig. 70	132395	B-595		7.000 (177.8)	10.000 (254.0)	60	13510

Pre-Printed GHS / CLP Chemical Labels (B-7569)

For GHS and hazard communication labeling.

- Blank labels with pre-printed red diamonds save time during label design
- 6 diamond layouts that match templates in Markware™ Software, available in 2 sizes each
- Indoor/outdoor vinyl material withstands exposure to moisture, chemicals and handling
- Markware™ Software v3.9.1 or higher required (free upgrade available for v3.x owners)

Service temp: -4°F to 180°F Application temp: 50°F to 180°F
Average Outdoor Durability: 3-5 years

Catalog #	Legend	Label Height A Inch (mm)	Label Width B Inch (mm)	Labels Per Row	Labels Per Roll	Rec. Ribbon
130766	L1 Diamond + Text	4.100 (104.1)	6.100 (154.9)	1	90	13511
130772	L1 Diamond + Text	6.100 (154.9)	8.300 (210.8)	1	70	13510
130767	L2 Diamond + Text	4.100 (104.1)	6.100 (154.9)	1	90	13511
130773	L2 Diamond + Text	6.100 (154.9)	8.300 (210.8)	1	70	13510
130768	L3A Diamond + Text	4.100 (104.1)	6.100 (154.9)	1	90	13511
130774	L3A Diamond + Text	6.100 (154.9)	8.300 (210.8)	1	70	13510
130769	L3B Diamond + Text	4.100 (104.1)	6.100 (154.9)	1	90	13511
130775	L3B Diamond + Text	6.100 (154.9)	8.300 (210.8)	1	70	13510
130770	L4A Diamond + Text	4.100 (104.1)	6.100 (154.9)	1	90	13511
130776	L4A Diamond + Text	6.100 (154.9)	8.300 (210.8)	1	70	13510
130771	L4B Diamond + Text	4.100 (104.1)	6.100 (154.9)	1	90	13511
130777	L4B Diamond + Text	6.100 (154.9)	8.300 (210.8)	1	70	13510



! **GHS/CLP Label Module included in MarkWare™ Software**

- 18 pre-formatted label layouts with built-in GHS symbols
- Labels are auto-populated based on selected hazard statements and GHS symbols
- Prompts for additional variable data and second language option

Low-Halide Polyester (B-569)

For labeling stainless steel and smooth surfaces.

- Low-halide content for labeling stainless steel pipes and surfaces
- Applies best to very smooth surfaces and is ideal for mounting to rigid panels

Service temp: -40°F to 212°F Application temp: 0°F to 212°F
Average Outdoor Durability: 3-5 years

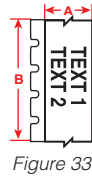


Diagram	Catalog #	Color	Label Width A Inch (mm)	Roll Length B Inch (mm)	Labels Per Roll	Rec. Ribbon
Fig. 33	13564	Clear	4,000 (101.6)	50ft. (15.2m)	1 roll (cont)	13511
Fig. 33	13568	Clear	6,000 (152.4)	50ft. (15.2m)	1 roll (cont)	13511
Fig. 33	13572	Clear	7,000 (177.8)	50ft. (15.2m)	1 roll (cont)	13510
Fig. 33	13576	Clear	10,000 (254.0)	50ft. (15.2m)	1 roll (cont)	13510
Fig. 33	13565	White	4,000 (101.6)	50ft. (15.2m)	1 roll (cont)	13511
Fig. 33	13569	White	6,000 (152.4)	50ft. (15.2m)	1 roll (cont)	13511
Fig. 33	13573	White	7,000 (177.8)	50ft. (15.2m)	1 roll (cont)	13510
Fig. 33	13577	White	10,000 (254.0)	50ft. (15.2m)	1 roll (cont)	13510
Fig. 33	13566	Yellow	4,000 (101.6)	50ft. (15.2m)	1 roll (cont)	13511
Fig. 33	13570	Yellow	6,000 (152.4)	50ft. (15.2m)	1 roll (cont)	13511
Fig. 33	13574	Yellow	7,000 (177.8)	50ft. (15.2m)	1 roll (cont)	13510
Fig. 33	13578	Yellow	10,000 (254.0)	50ft. (15.2m)	1 roll (cont)	13510
Fig. 33	13567	Orange	4,000 (101.6)	50ft. (15.2m)	1 roll (cont)	13511
Fig. 33	13571	Orange	6,000 (152.4)	50ft. (15.2m)	1 roll (cont)	13511
Fig. 33	13575	Orange	7,000 (177.8)	50ft. (15.2m)	1 roll (cont)	13510
Fig. 33	13579	Orange	10,000 (254.0)	50ft. (15.2m)	1 roll (cont)	13510
Fig. 33	99167	Ochre	4,000 (101.6)	50ft. (15.2m)	1 roll (cont)	13511
Fig. 33	99168	Ochre	6,000 (152.4)	50ft. (15.2m)	1 roll (cont)	13511
Fig. 33	99169	Ochre	7,000 (177.8)	50ft. (15.2m)	1 roll (cont)	13510
Fig. 33	99170	Ochre	10,000 (254.0)	50ft. (15.2m)	1 roll (cont)	13510

Retro Reflective Tape (B-584)

For highly reflective identification that shines back brightly when struck by light.

- Ideal for labeling outdoor metal utility poles, pedestals, jobsite equipment and roof-top equipment especially in low light

Service temp: -40°F to 158°F Average Outdoor Durability: 4 to 6 years
Application temp: 0°F to 158°F (yellow & orange), 50°F to 158°F (silver)

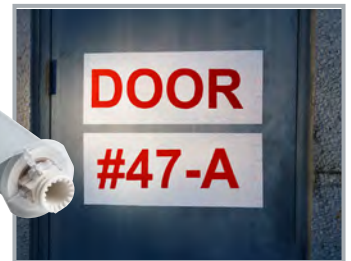
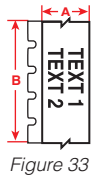


Diagram	Catalog #	Color	Label Width A Inch (mm)	Roll Length B Inch (mm)	Labels Per Roll	Rec. Ribbon
Fig. 33	13580	Silver	4,000 (101.6)	33ft. (10.0m)	1 roll (cont)	13511
Fig. 33	13585	Silver	7,000 (177.8)	33ft. (10.0m)	1 roll (cont)	13510
Fig. 33	13590	Silver	10,000 (254.0)	33ft. (10.0m)	1 roll (cont)	13510
Fig. 33	51584	Yellow	4,000 (101.6)	33ft. (10.0m)	1 roll (cont)	13511
Fig. 33	51585	Yellow	7,000 (177.8)	33ft. (10.0m)	1 roll (cont)	13510
Fig. 33	51586	Yellow	10,000 (254.0)	33ft. (10.0m)	1 roll (cont)	13510
Fig. 33	13404	Orange	4,000 (101.6)	33ft. (10.0m)	1 roll (cont)	13511
Fig. 33	13403	Orange	7,000 (177.8)	33ft. (10.0m)	1 roll (cont)	13510
Fig. 33	13402	Orange	10,000 (254.0)	33ft. (10.0m)	1 roll (cont)	13510

BradyGlo™ High-Intensity Photoluminescent Tape (B-526)

Identification that glows in the dark for up to 10 hours!

- Ideal for marking emergency utility shut-offs, fire extinguishers, alarm pulls, and vital equipment controls

Service temp: -40°F to 140°F Application temp: 40°F to 140°F

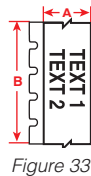


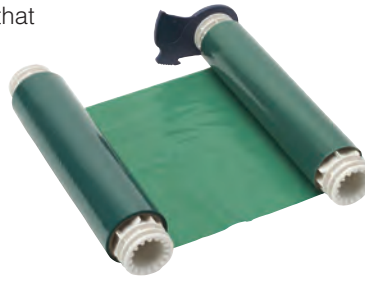
Diagram	Catalog #	Color	Label Width A Inch (mm)	Roll Length B Inch (mm)	Labels Per Roll	Rec. Ribbon
Fig. 33	105912	Luminous Green	4,000 (101.6)	33ft. (10.0m)	1 roll (cont)	13511 or 13595
Fig. 33	105913	Luminous Green	7,000 (177.8)	33ft. (10.0m)	1 roll (cont)	13510 or 13514
Fig. 33	105914	Luminous Green	7,000 (177.8)	33ft. (10.0m)	1 roll (cont)	13510 or 13514

BBP®85 Printer Ribbons

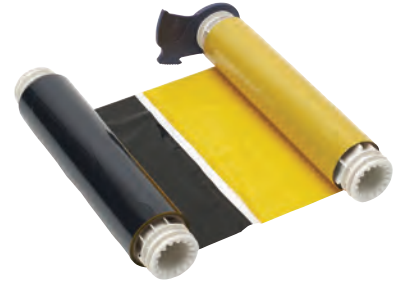
- Choose from a variety of heavy-duty, smear-proof ribbons, including single color and multi-color paneled ribbons. These ribbons are uniquely designed with memory cells that communicate information to the BBP®85 printer.

Single Color Print Ribbons

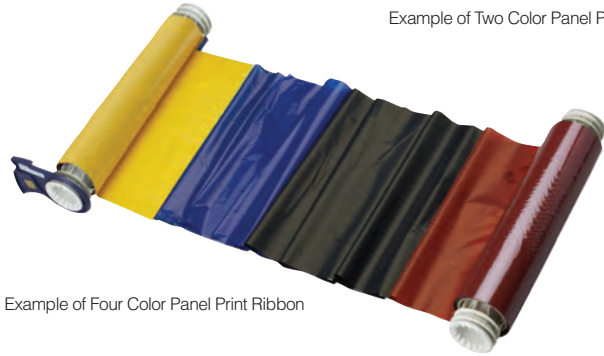
Catalog #	Color	Size Inch (mm)	Length
13511	Black	6.250 (158.7)	200 ft. (60.9 m)
13510	Black	8.800 (223.5)	200 ft. (60.9 m)
13513	White	6.250 (158.7)	200 ft. (60.9 m)
13512	White	8.800 (223.5)	200 ft. (60.9 m)
13595	Red	6.250 (158.7)	200 ft. (60.9 m)
13514	Red	8.800 (223.5)	200 ft. (60.9 m)
13596	Blue	6.250 (158.7)	200 ft. (60.9 m)
13515	Blue	8.800 (223.5)	200 ft. (60.9 m)
13597	Green	6.250 (158.7)	200 ft. (60.9 m)
13516	Green	8.800 (223.5)	200 ft. (60.9 m)
13598	Magenta	6.250 (158.7)	200 ft. (60.9 m)
13517	Magenta	8.800 (223.5)	200 ft. (60.9 m)
13599	Yellow	6.250 (158.7)	200 ft. (60.9 m)
13518	Yellow	8.800 (223.5)	200 ft. (60.9 m)
13600	Orange	6.250 (158.7)	200 ft. (60.9 m)
13519	Orange	8.800 (223.5)	200 ft. (60.9 m)



Example of Single Color Print Ribbon



Example of Two Color Panel Print Ribbon



Example of Four Color Panel Print Ribbon

Two Color Paneled Print Ribbons

Catalog #	Color	Ribbon Width Inch (mm)	Color Panel Length Inch (mm)	Overall Length	Typical Yield From Ribbon
8" Panels used to create 2 color signs up to 8" long					
13523	Black & Red	6.250 (158.0)	8.000 (203.2) Panels	200 ft. (60.9 m)	One hundred 8" long labels
13522	Black & Red	8.800 (223.5)	8.000 (203.2) Panels	200 ft. (60.9 m)	One hundred 8" long labels
13527	Black & Yellow	6.250 (158.0)	8.000 (203.2) Panels	200 ft. (60.9 m)	One hundred 8" long labels
13529	Black & Orange	6.250 (158.0)	8.000 (203.2) Panels	200 ft. (60.9 m)	One hundred 8" long labels
13704	Black & Green	6.250 (158.0)	8.000 (203.2) Panels	200 ft. (60.9 m)	One hundred 8" long labels
13706	Black & Green	8.800 (223.5)	8.000 (203.2) Panels	200 ft. (60.9 m)	One hundred 8" long labels
15" Panels used to create 2 color signs up to 14" long					
13521	Black & Red	6.250 (158.0)	15.000 (381.0) Panels	200 ft. (60.9 m)	Sixty 14" long labels
13520	Black & Red	8.800 (223.5)	15.000 (381.0) Panels	200 ft. (60.9 m)	Sixty 14" long labels
13525	Black & Blue	6.250 (158.0)	15.000 (381.0) Panels	200 ft. (60.9 m)	Sixty 14" long labels
13524	Black & Blue	8.800 (223.5)	15.000 (381.0) Panels	200 ft. (60.9 m)	Sixty 14" long labels
13526	Black & Yellow	8.800 (223.5)	15.000 (381.0) Panels	200 ft. (60.9 m)	Sixty 14" long labels
13528	Black & Orange	8.800 (223.5)	15.000 (381.0) Panels	200 ft. (60.9 m)	Sixty 14" long labels
13705	Black & Green	6.250 (158.0)	15.000 (381.0) Panels	200 ft. (60.9 m)	Sixty 14" long labels
13707	Black & Green	8.800 (223.5)	15.000 (381.0) Panels	200 ft. (60.9 m)	Sixty 14" long labels

Four Color Paneled Print Ribbons

Catalog #	Color	Ribbon Width Inch (mm)	Color Panel Length Inch (mm)	Overall Length	Typical Yield From Ribbon
8" Panels used to create 4 color signs up to 8" long.					
13533	Black/Red/Blue/Yellow	6.250 (158.0)	8.000 (203.2) Panels	200 ft. (60.9 m)	Fifty 8" long labels
13532	Black/Red/Blue/Yellow	8.800 (223.5)	8.000 (203.2) Panels	200 ft. (60.9 m)	Fifty 8" long labels
13537	Black/Red/Blue/Green	6.250 (158.0)	8.000 (203.2) Panels	200 ft. (60.9 m)	Fifty 8" long labels
13536	Black/Red/Blue/Green	8.800 (223.5)	8.000 (203.2) Panels	200 ft. (60.9 m)	Fifty 8" long labels
51448	Black/Red/Orange/Blue	8.800 (223.5)	8.000 (203.2) Panels	200 ft. (60.9 m)	Fifty 8" long labels
15" Panels used to create 4 color signs up to 14" long.					
13531	Black/Red/Blue/Yellow	6.250 (158.0)	15.000 (381.0) Panels	200 ft. (60.9 m)	Thirty 14" long labels
13530	Black/Red/Blue/Yellow	8.800 (223.5)	15.000 (381.0) Panels	200 ft. (60.9 m)	Thirty 14" long labels
13535	Black/Red/Blue/Green	6.250 (158.0)	15.000 (381.0) Panels	200 ft. (60.9 m)	Thirty 14" long labels
13534	Black/Red/Blue/Green	8.800 (223.5)	15.000 (381.0) Panels	200 ft. (60.9 m)	Thirty 14" long labels

The BBP®85 Sign and Label Printer:

Big, bold and better than ever.

Printer and Accessories

Catalog #	Description
BBP85-MWL	BBP®85 Printer with Markware™ Lean Software
BBP85	BBP®85 Sign & Label Printer
BBP85-31-71-KIT	BBP®85 Printer, BBP®31 Printer, BMP®71 Printer and Markware™ Lean Software
BBP85-31-KIT	BBP®85 Printer, BBP®31 Printer and Markware™ Lean Software
BBP85-71-KIT	BBP®85 Printer, BMP®71 Printer and Markware™ Lean Software
BBP85-BLS1255-MWL	BBP®85 Printer, BLS 1255 Laminating System, Markware™ Lean Software and (1) Plastic Rigid Blank Sign 10.25" x 14.25"
B85-DC	BBP®85 Printer Dust Cover
B85-STYLUS	BBP®85 Replacement Stylus 3 Pack
64692	Print Head Cleaning Pen

* Printer ships with documentation CD, printer driver CD, power cord, USB cord, quick start guide, cleaning kit and 5-year warranty.

BBP®85
LABEL PRINTER



BLS1255 Laminating System & Rigid Sign Panels

Quickly mount BBP®85 output to plastic or aluminum sign blanks... takes only seconds!

- Overlaminates documents with a single or double-sided flexible, clear overlaminator
- Sign blanks let you laminate output using the BLS1255 Laminator.
- Plastic and aluminum blanks are sized to fit output
- Clear acrylic panels have pressure sensitive adhesive to protect graphics

BLS1255 Laminating System

Catalog #	Description
105038	BLS1255 Laminating System
105041	12" x 50" Double-sided polyester overlaminator

U.S. Patent No. 8,542,155.



Y2908520 MS2908520

© 2014 Brady Worldwide Inc. ALL RIGHTS RESERVED

Aluminum - rounded corners & hole punched

Catalog #	Material	Color	Size	Qty/Pk
13629	Aluminum	White	4.25" x 6.25"	10
106461	Aluminum	White	4.25" x 10.25"	10
13632	Aluminum	White	7.25" x 10.25"	10
106460	Aluminum	White	7.63" x 10.38"	10
106462	Aluminum	White	10.25" x 10.25"	10
13635	Aluminum	White	10.25" x 14.25"	10
13630	Aluminum	Yellow	4.25" x 6.25"	10
13633	Aluminum	Yellow	7.25" x 10.25"	10
13636	Aluminum	Yellow	10.25" x 14.25"	10
13631	Aluminum	Orange	4.25" x 6.25"	10
13634	Aluminum	Orange	7.25" x 10.25"	10
13637	Aluminum	Orange	10.25" x 14.25"	10

Plastic - rounded corners & hole punched

Catalog #	Material	Color	Size	Qty/Pk
13620	Plastic	White	4.25" x 6.25"	10
13623	Plastic	White	7.63" x 10.38"	10
13626	Plastic	White	10.25" x 14.25"	10
13621	Plastic	Yellow	4.25" x 6.25"	10
13624	Plastic	Yellow	7.63" x 10.38"	10
13627	Plastic	Yellow	10.25" x 14.25"	10
13622	Plastic	Orange	4.25" x 6.25"	10
13625	Plastic	Orange	7.63" x 10.38"	10
13628	Plastic	Orange	10.25" x 14.25"	10

Clear acrylic panels with pressure sensitive adhesive
Use to mount output behind a clear panel to add rigidity while protecting the graphics

Catalog #	Material	Color	Size	Qty/Pk
13638	Acrylic	Clear	4" x 6"	10
106464	Acrylic	Clear	4.25" x 10.25"	10
13639	Acrylic	Clear	7.25" x 10"	10
106463	Acrylic	Clear	7.25" x 10.25"	10
13640	Acrylic	Clear	10" x 14"	10
106465	Acrylic	Clear	10.25" x 10.25"	10

Brady360®
5-Year
Warranty

BRADY 360
5 YEAR
WARRANTY

We have you Covered.

We always stand behind our products to make sure they exceed your expectations and to deliver you an unrivaled customer experience. We've strengthened our commitment to you with a **5-year printer warranty standard and free of charge** on our benchtop printer models.*

With a team of 30 certified tech support and repair technicians and our 5-year warranty backing you up, you can rest assured you'll have the support you need — every step of the way.

Our 5-year warranty covers repair parts & labor, one print head replacement, a free loaner printer, a stress-free printer setup session, and much more. You also have access to additional fee-based support, including an on-site repair service, custom programming and advanced integrations services.

*Excludes repairs due to negligence, Wraptor™ model and handheld models.

See www.BradyID.com/brady360 for full coverage details & restrictions.

USA

Customer Service: 1-888-272-3946
Inside Sales: 1-888-311-0775
www.BradyID.com

Canada

Customer Service: 1-800-263-6179
www.BradyCanada.ca

Mexico

Customer Service: 1-800-262-7777
Inside Sales: 1-800-262-7777 ext 177
www.BradyLatinAmerica.com

BRADY
WHEN PERFORMANCE MATTERS MOST™